

## BEER AND CIDER

DRAUGHT 40 CL

CARLSBERG EXPORT 82  
ERIKSBERG KARAKTÄR 90  
BROOKLYN DEFENDER IPA 95  
KRONENBOURG BLANC 95

## BOTTLE

CARLSBERG HOF 75  
SAN MIGUEL FRESCA 77  
SAN MIGUEL GLUTEN FREE 85  
NCB 100W IPA 95  
NCB HALO SOUR 95  
NCB KELLERBIER 95  
ERDINGER WEISSBIER 50CL 90  
GALIPETTE CIDRE BRUT 85  
SOMERSBY PEAR 77

## SOFT DRINKS

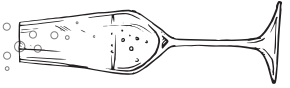
SAN PELLEGRINO 25cl 40  
SAN PELLEGRINO 50cl 60  
AQUA PANNA 25 cl 40  
AQUA PANNA 75 cl 60  
PEPSI, MAX, ZINGO, 7UP 38  
BARRELS & DRUMS SPARKLING 12CL 70  
SOMMERSBY LEMON SPRITZ 0% 55  
CARLSBERG 0% 33 CL 55  
BROOKLYN SPECIAL EFFECT 33CL 60  
GINGER BEER 45

STEAK AND FRIES FRIDAY

# LUNCH

11.30 - 16.00

*bokningsbart från till 16.15*



## LUS

*Lunch utan slut*



@kitchenandtablekungsholmen

## MAIN DISHES

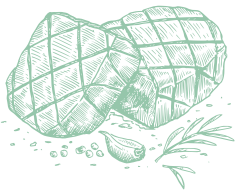
### STEAK MINUTE 165

Pommes frites, rödvinssås, tomatsallad & brynt smör béarnaise

### THE GREEN PROJECT 150

Daily Vegetarian Special, skapad av vårt kök med miljötänk!

Don't forget to order your sides!



## SIDES

### FRENCH FRIES 45

### GREEN SALAD 45

### TOMATO SALAD 65

## DIP

### AIOLI 35

### DIJONNAISE 35

### BÉARNAISE 35

## SOMETHING SWEET

### CRÈME BRÛLÉE 105

### CHOCOLATE TRUFFLE 35

Fråga din servitör om dagens tryffel!

## AVEC

### CALVADOS 22 SEK / CL

### WHISKEY 24 SEK / CL

### RUM ZACAPA 23 42 SEK / CL

### COGNAC 24 SEK / CL

## COFFEE AND TE

### KAFFE OCH TE 30

### ESPRESSO SINGLE 39 / DOUBLE 45

### MACCHIATO SINGLE 39 / DOUBLE 45

### CAPPUCCINO/ CAFE LATTE/ LATTE MACCHIATO 50

## LUNCH WINE HALF GLASS

### VILLA BIANCHI VERDICCHIO 65

MARCHE ITALY

### MONTEPULCIANO D'ABRUZZO PODERE 65

ABRUZZO, ITALY

### LA VIEILLE FERME ROSÉ 65

RHÔNE, FRANCE

## WHITE WINE

### VILLA BIANCHI VERDICCHIO 105/475

MARCHE ITALY

### GRÜNER VELTLINER SOCIAL CLUB 1 LITER 115/650

SONNHOF, AUSTRIA

### PIEROPAN SOAVE CLASSICO ORGANIC 140/675

VENETO, ITALY

### GUT HERMANNENBERG RIESLING 140/699

NAHE, GEMANY

### SAUVIGNON BLANC "PRIMULA" 150/750

LOIRE, FRANCE

## RED WINE

### MONTEPULCIANO D'ABRUZZO PODERE 105/475

ABRUZZO, ITALY

### PARAJES DEL VALLE MONASTRELL

### ECOLOGICO 115/570

JUMILLA, SPAIN

### BUTCHER PINOT NOIR 129/645

BURGENLAND, AUSTRIA

### RABBLE ZINFANDEL 165/820

PASO ROBLES, USA

### A. CHRISTMANN AUS DEN LAGEN 195/975

PFALZ, GERMANY

## ROSE

### LA VIEILLE FERME ROSÉ 105/490

RHÔNE, FRANCE

### STUDIO MIRAVAL 120/599

PROVENCE, FRANCE

## SPARKLING

### NV RUIDA DOMO CAVA 109/540

CATALONIA, SPAIN

### JEIO ORGANIC BRUT PROSECCO 120/590

VALDOBBIADENE, ITALY

### BOUCHÉ CUVÉE RÉSERVÉE 155/800

CHAMPAGNE, FRANCE

### BOUCHÉ BLANC DE BLANCS 1100

CHAMPAGNE, FRANCE

### BILLECART-SALMON BRUT NATURE 1250

CHAMPAGNE, FRANCE

### BILLECART-SALMON ROSÉ 2100

CHAMPAGNE, FRANCE

### J.PERRIER CUVÉE ROYALE BRUT 1500

CHAMPAGNE, FRANCE

## LUNCH WINE HALF GLASS

**VILLA BIANCHI VERDICCHIO 65**

MARCHE ITALY

**MONTEPULCIANO D'ABRUZZO PODERE 65**

ABRUZZO, ITALY

**LA VIEILLE FERME ROSÉ 65**

RHÔNE, FRANCE

## LUNCH WINE HALF GLASS

**VILLA BIANCHI VERDICCHIO 65**

MARCHE ITALY

**MONTEPULCIANO D'ABRUZZO PODERE 65**

ABRUZZO, ITALY

**LA VIEILLE FERME ROSÉ 65**

RHÔNE, FRANCE

## WHITE WINE

**VILLA BIANCHI VERDICCHIO 105/475**

MARCHE ITALY

**GRÜNER VELTLINER SOCIAL CLUB 1 LITER 115/650**

SONNHOF, AUSTRIA

**PIEROPAN SOAVE CLASSICO ORGANIC 140/675**

VENETO, ITALY

**GUT HERMANNENBERG RIESLING 140/699**

NAHE, GEMANY

**SAUVIGNON BLANC "PRIMULA" 150/750**

LOIRE, FRANCE

## WHITE WINE

**VILLA BIANCHI VERDICCHIO 105/475**

MARCHE ITALY

**GRÜNER VELTLINER SOCIAL CLUB 1 LITER 115/650**

SONNHOF, AUSTRIA

**PIEROPAN SOAVE CLASSICO ORGANIC 140/675**

VENETO, ITALY

**GUT HERMANNENBERG RIESLING 140/699**

NAHE, GEMANY

**SAUVIGNON BLANC "PRIMULA" 150/750**

LOIRE, FRANCE

## RED WINE

**MONTEPULCIANO D'ABRUZZO PODERE 105/475**

ABRUZZO, ITALY

**PARAJES DEL VALLE MONASTRELL**

**ECOLOGICO 115/570**

JUMILLA, SPAIN

**BUTCHER PINOT NOIR 129/645**

BURGENLAND, AUSTRIA

**RABBLE ZINFANDEL 165/820**

PASO ROBLES, USA

**A. CHRISTMANN AUS DEN LAGEN 195/975**

PFALZ, GERMANY

## RED WINE

**MONTEPULCIANO D'ABRUZZO PODERE 105/475**

ABRUZZO, ITALY

**PARAJES DEL VALLE MONASTRELL**

**ECOLOGICO 115/570**

JUMILLA, SPAIN

**BUTCHER PINOT NOIR 129/645**

BURGENLAND, AUSTRIA

**RABBLE ZINFANDEL 165/820**

PASO ROBLES, USA

**A. CHRISTMANN AUS DEN LAGEN 195/975**

PFALZ, GERMANY

## ROSE

**LA VIEILLE FERME ROSÉ 105/490**

RHÔNE, FRANCE

**STUDIO MIRAVAL 120/599**

PROVENCE, FRANCE

## ROSE

**LA VIEILLE FERME ROSÉ 105/490**

RHÔNE, FRANCE

**STUDIO MIRAVAL 120/599**

PROVENCE, FRANCE

## SPARKLING

**NV RUIDA DOMO CAVA 109/540**

CATALONIA, SPAIN

**JEIO ORGANIC BRUT PROSECCO 120/590**

VALDOBBIADENE, ITALY

**BOUCHÉ CUVÉE RÉSERVÉE 155/800**

CHAMPAGNE, FRANCE

**BOUCHÉ BLANC DE BLANCS 1100**

CHAMPAGNE, FRANCE

**BILLECART-SALMON BRUT NATURE 1250**

CHAMPAGNE, FRANCE

**BILLECART-SALMON ROSÉ 2100**

CHAMPAGNE, FRANCE

**J.PERRIER CUVÉE ROYALE BRUT 1500**

CHAMPAGNE, FRANCE

## SPARKLING

**NV RUIDA DOMO CAVA 109/540**

CATALONIA, SPAIN

**JEIO ORGANIC BRUT PROSECCO 120/590**

VALDOBBIADENE, ITALY

**BOUCHÉ CUVÉE RÉSERVÉE 155/800**

CHAMPAGNE, FRANCE

**BOUCHÉ BLANC DE BLANCS 1100**

CHAMPAGNE, FRANCE

**BILLECART-SALMON BRUT NATURE 1250**

CHAMPAGNE, FRANCE

**BILLECART-SALMON ROSÉ 2100**

CHAMPAGNE, FRANCE

**J.PERRIER CUVÉE ROYALE BRUT 1500**

CHAMPAGNE, FRANCE

# WINE LIST



# WINE LIST

